

T. Bulik, J.Carr
SSC
Heidelberg, 4 April, 2013

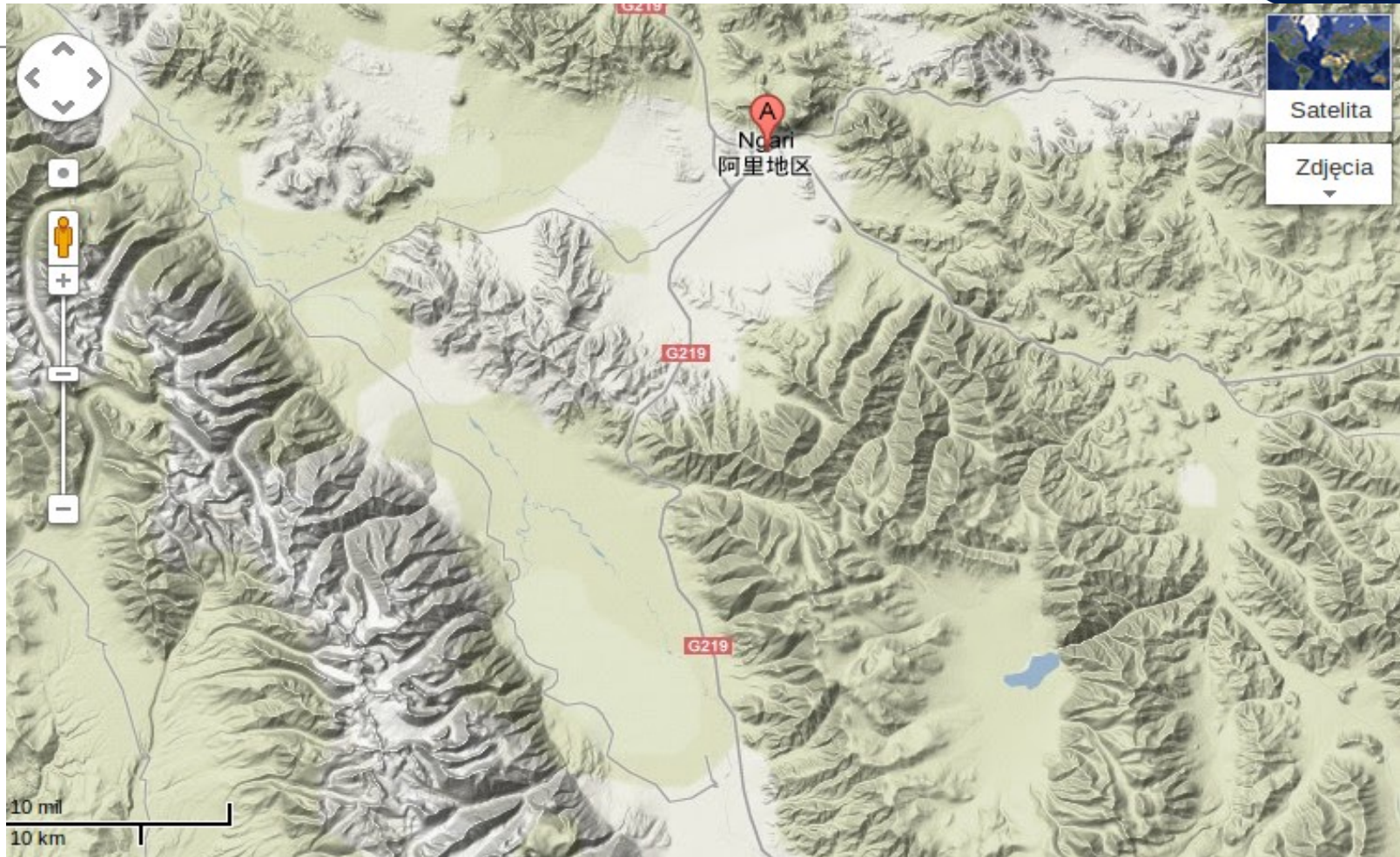
Other candidate sites

Two other sites



- China:
 - A site in Tibet near Ali
 - Elevation approx 4300m
 - Nearby observatory is developed
 - Basic criteria (flatness, area, etc.) probably satisfied
- India
 - Two sites in Ladakh
 - Close to the city of Leh (<50km)
 - Altitude 3500 m
 - Basic criteria satisfied

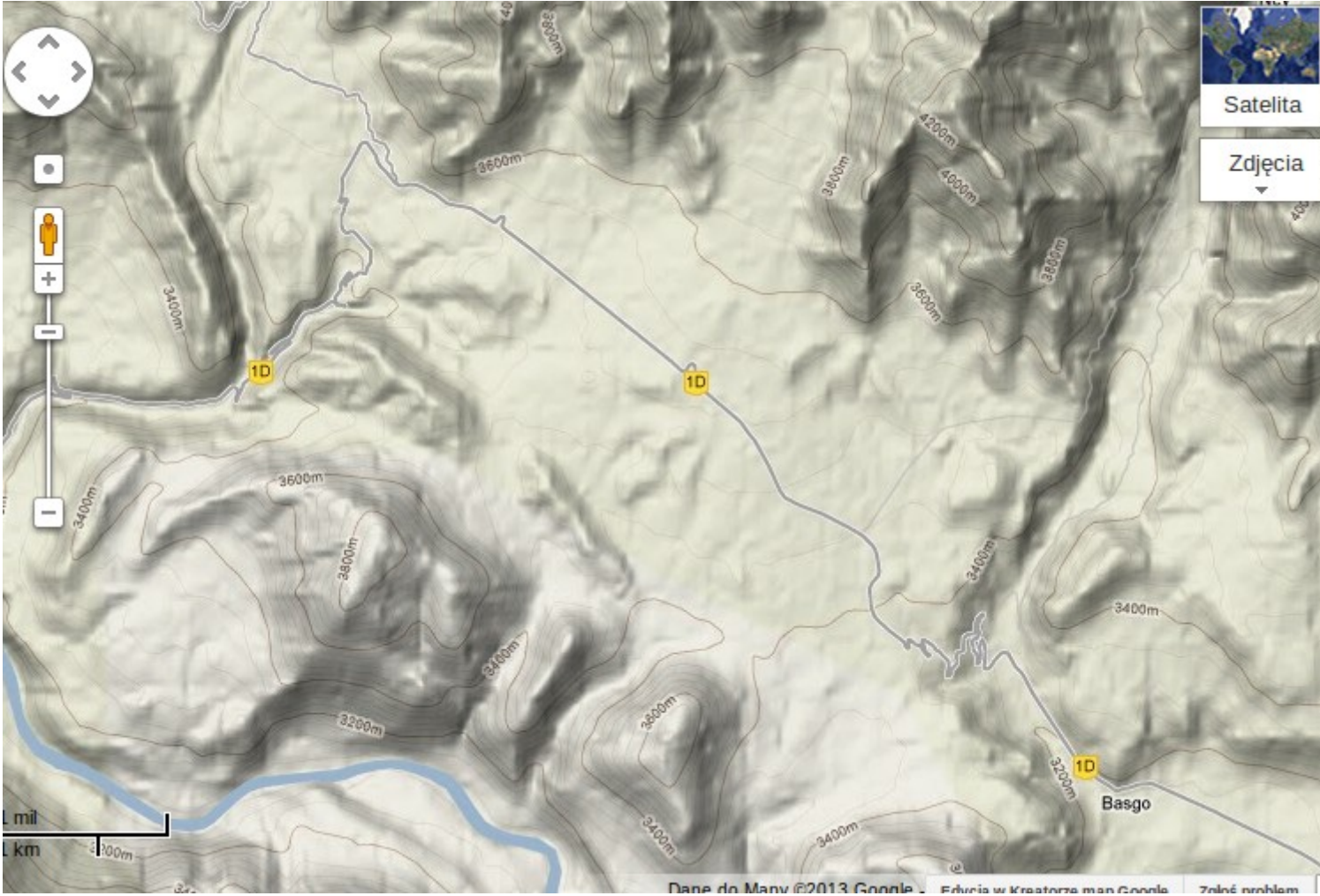
Tibet, China



Main reason for setting low priority:

Access next to impossible, two attempts, two failures, Tibet closed.

Likir, Ladakh, India



Upshi, Ladakh, India



India sites weaknesses

Access roads closed for half of a year – only air transport available

Cloudiness most likely too high

Main road nearby

Better sites towards south east (Hanle), but very strict access restrictions

Summary:

Sites moved to low priority category. No instrumentation sent.

Only satellite and local data available.

Just in case.....

Table 1: Location of prospective sites in Ladakh

	latitude	longitude	altitude m	height difference m
Likir	34°14'44.27" N	77°13'53.94" E	3506	37 (NS) 23 (EW)
Upshi	33°50'21.08" N	77°48'58.04" E	3463	74 (NS) 66 (EW)

Chinese site

- Ali observatory: 32 19'N 80 01'E
- Height 4300 m.a.s.l.