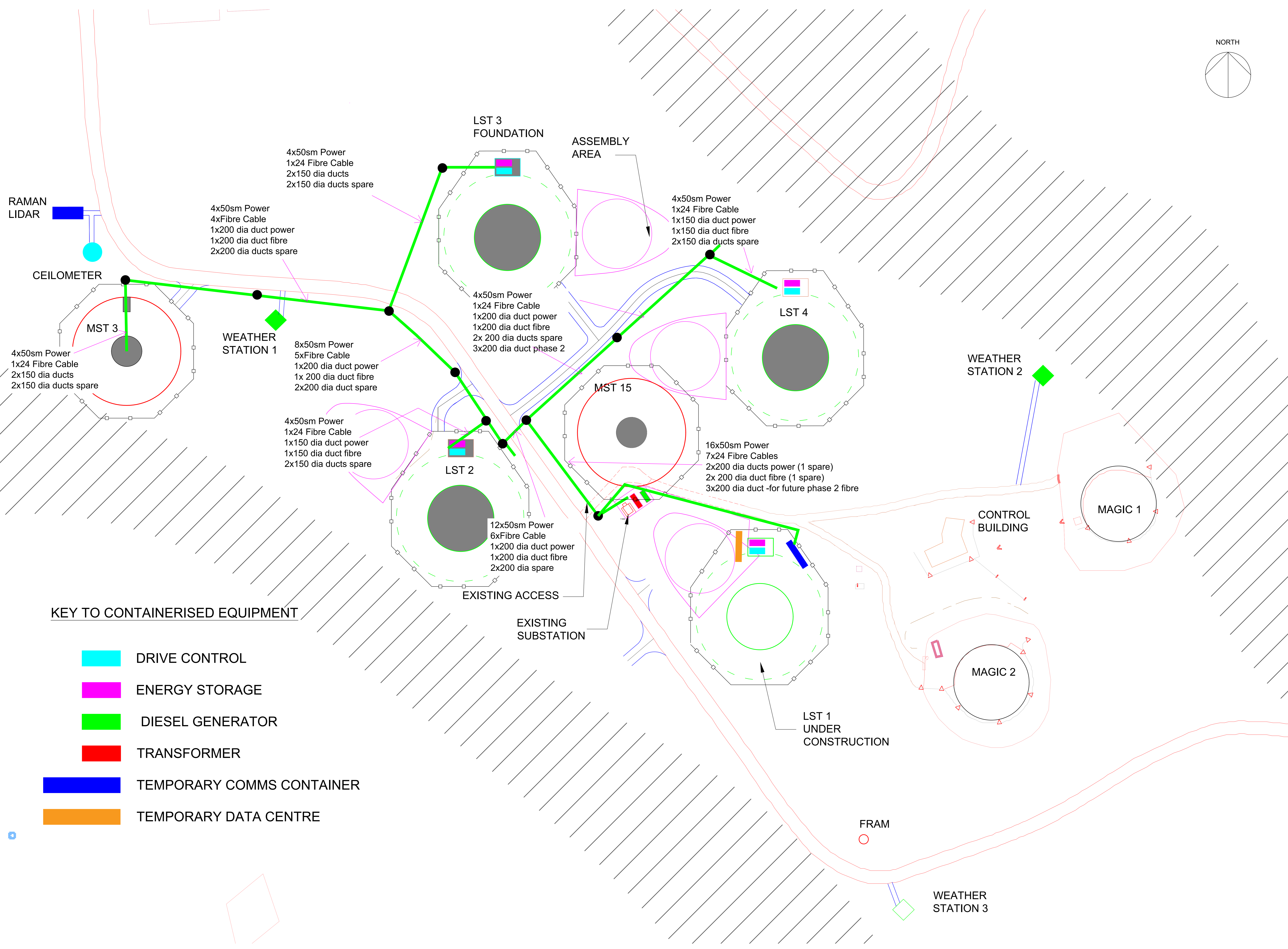


NOTES
 1) All ducts are shown in mm.
 2) Maximum distance between drawpits - shown as black circles to be 50metres.
 3) The cable routes shown on this drawing are conceptual only. The detail designer shall consider the existing power and data cabling layout and also the topography of the site in their final designs.
 4) Further survey work should be undertaken by the detailed design Architect to establish the correct location of the substation compound and MST 15 and its fenceline.



4x50sm Power
1x24 Fibre Cable
2x150 dia ducts
2x150 dia ducts spare

4x50sm Power
1x24 Fibre Cable
2x150 dia ducts
2x150 dia ducts spare

8x50sm Power
5xFibre Cable
1x200 dia duct power
1x 200 dia duct fibre
2x200 dia duct spare

4x50sm Power
1x24 Fibre Cable
1x150 dia duct power
1x150 dia duct fibre
2x150 dia ducts spare

4x50sm Power
1x24 Fibre Cable
1x200 dia duct power
1x200 dia duct fibre
2x 200 dia ducts spare
3x200 dia duct phase 2

12x50sm Power
6xFibre Cable
1x200 dia duct power
1x200 dia duct fibre
2x200 dia spare

4x50sm Power
1x24 Fibre Cable
1x150 dia duct power
1x150 dia duct fibre
2x150 dia ducts spare

16x50sm Power
7x24 Fibre Cables
2x200 dia ducts power (1 spare)
2x 200 dia duct fibre (1 spare)
3x200 dia duct -for future phase 2 fibre

KEY TO CONTAINERISED EQUIPMENT

- DRIVE CONTROL
- ENERGY STORAGE
- DIESEL GENERATOR
- TRANSFORMER
- TEMPORARY COMMS CONTAINER
- TEMPORARY DATA CENTRE

INDICATES TERRAIN UNSUITABLE FOR SITING OF TELESCOPES

REV	DESCRIPTION	DATE
P1	FOR REVIEW	07/12/18



TITLE
 CHERENKOV TELESCOPE ARRAY
 CTA NORTH - ORM
 LST AND MST SHORT PROJECT
 LAYOUT
 CABLE ROUTES SHEET 1

SCALE	DATE	DRAWN	CHECKED
1:500	28/11/18	SLB	DB
DRAWING NUMBER	REVISION		
INFRA-DES-600-03 N	P1		