

Infra Workshop Riba 3 - Development Overview

**David Bristow
Steve Brown**

Bologna 8 – 9.06.2017



1. Update: Site Characterisation

2. Overview and discussion on the the key elements of the project.

3. Overview of progress in the detailed process

Development Overview – Geotechnical Survey



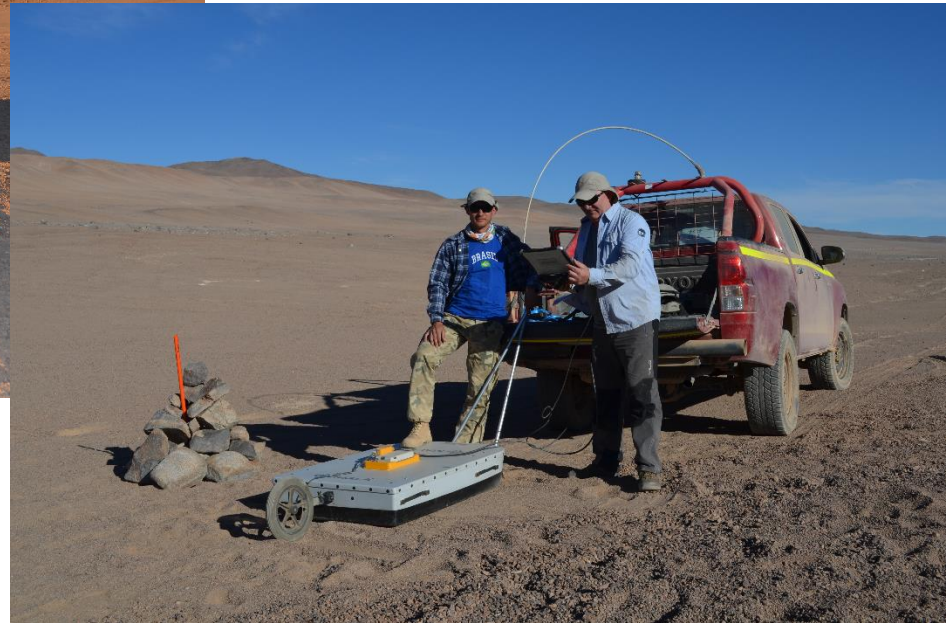
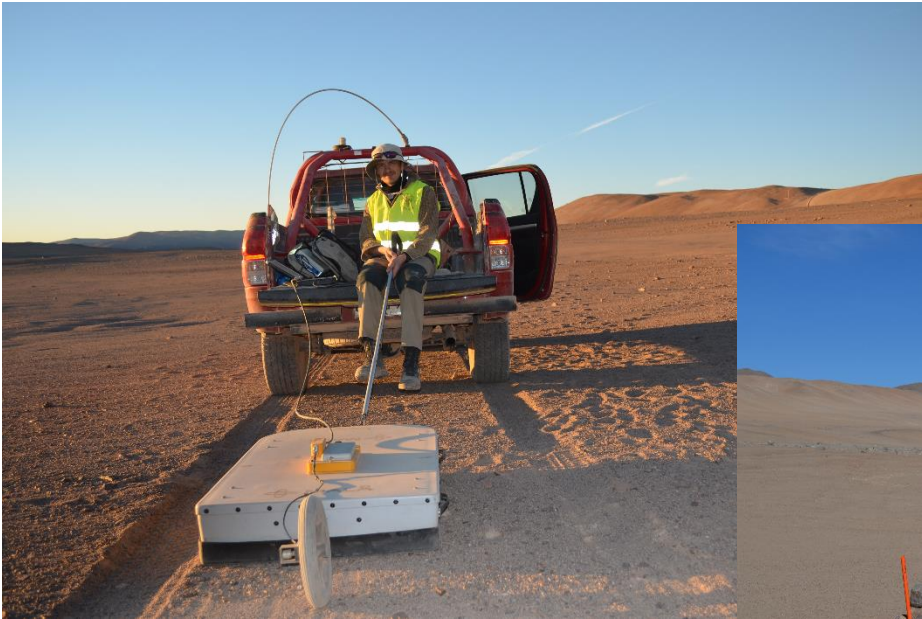
Field work complete



Development Overview – Geological Survey



Ground penetrating radar



Development Overview – Topographical Survey



Site data collection complete

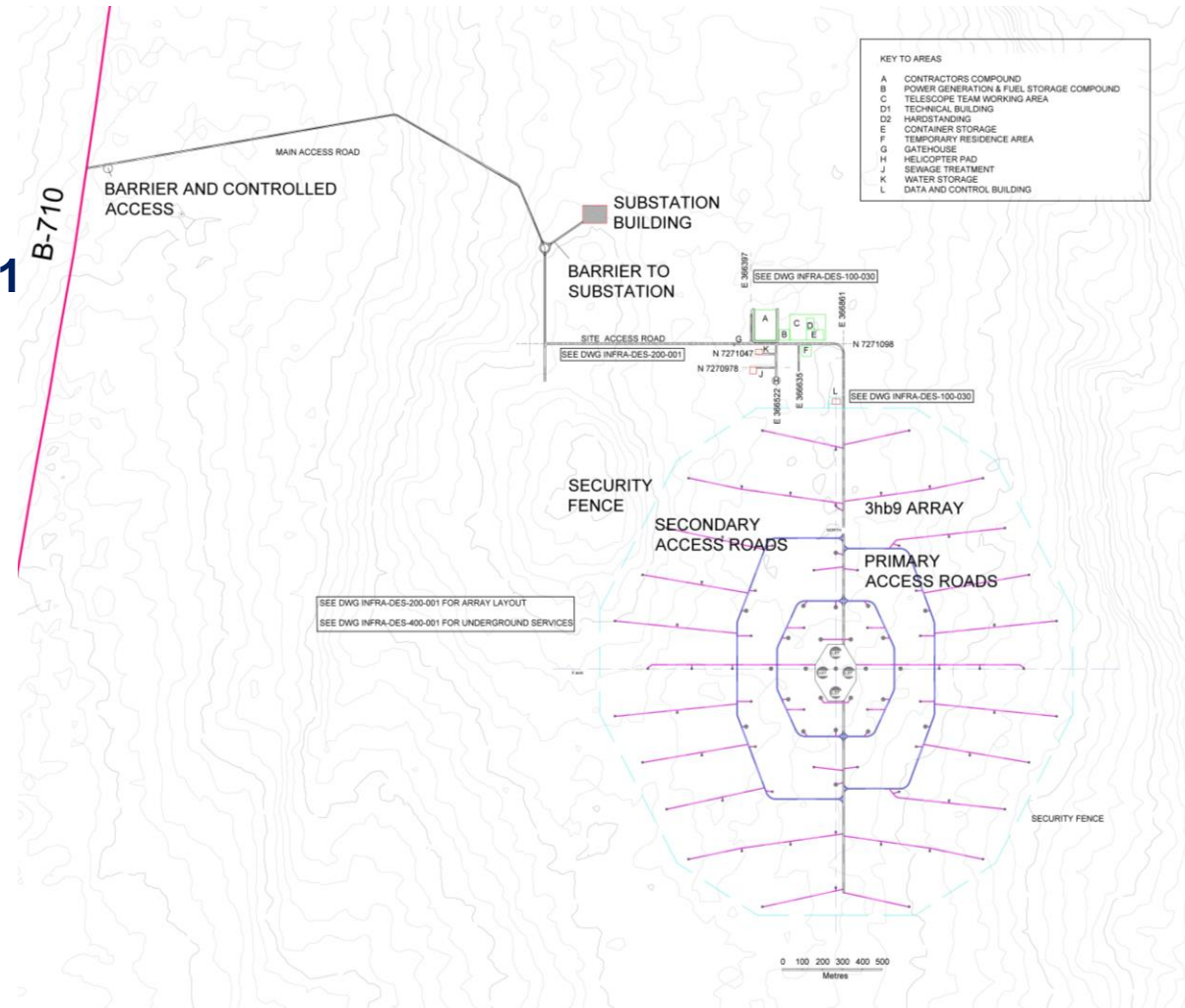


Development Overview



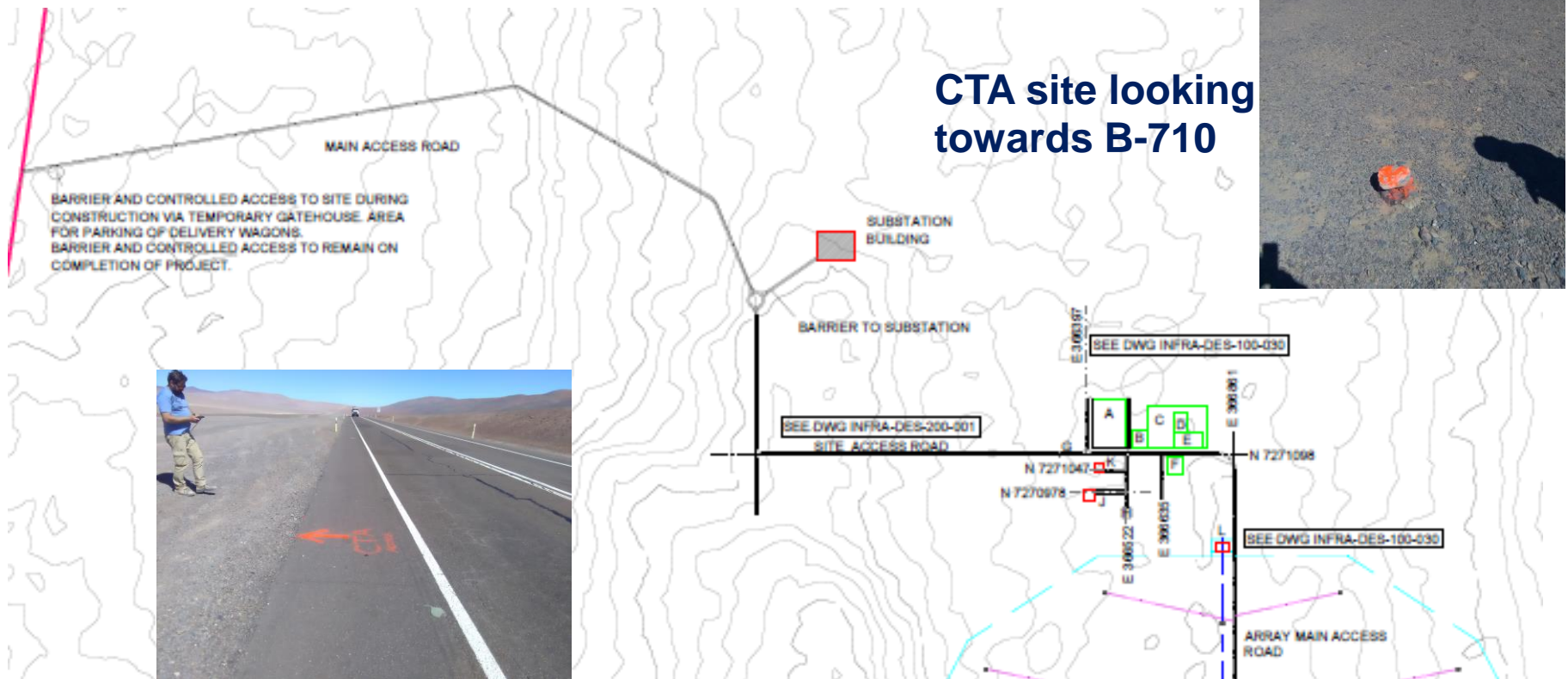
Key Elements

- Road Junction with B-71
- Road network
- Support Buildings
- Ducts and Cables



Development Overview

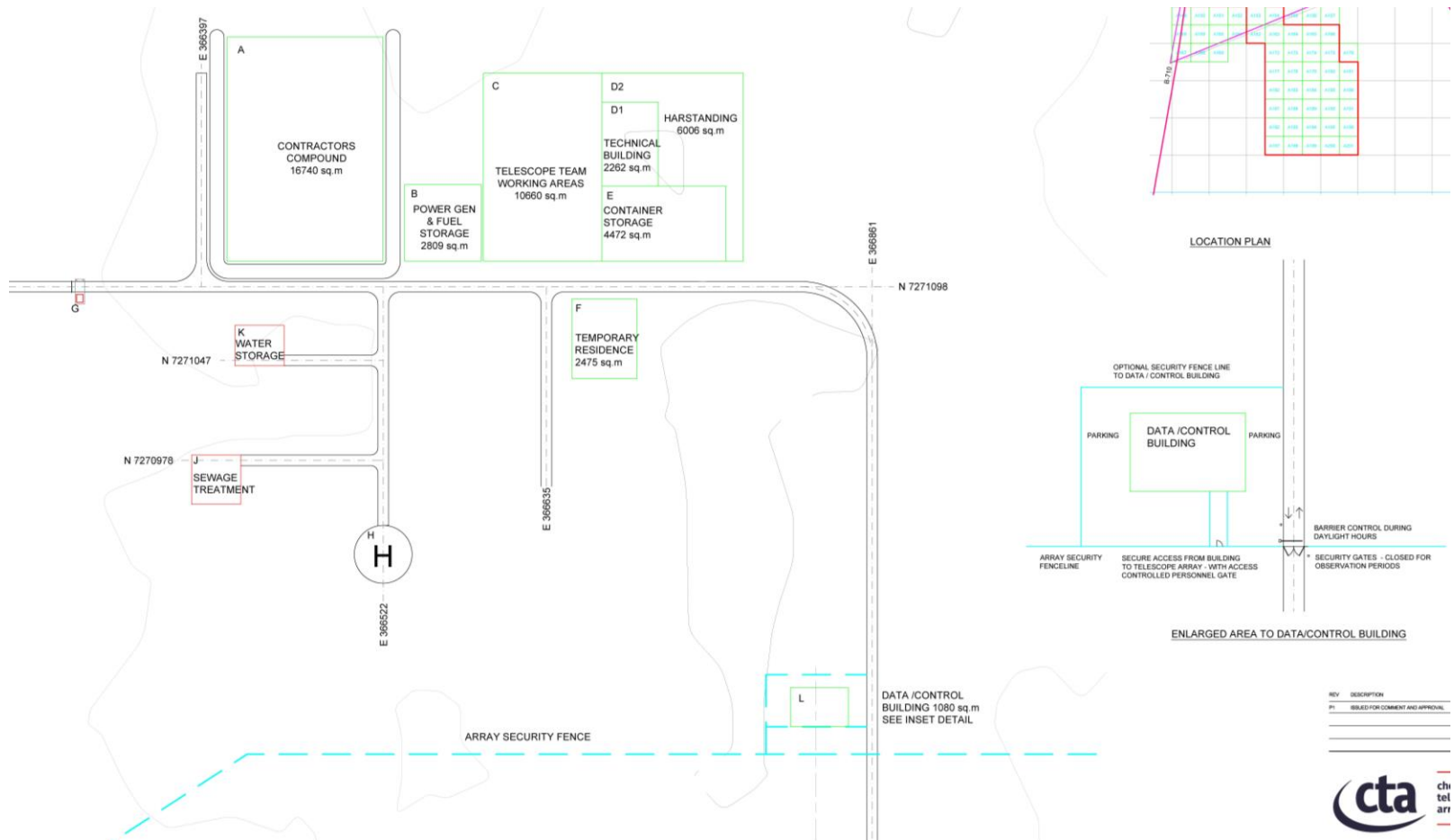
Road junction and main access road



Development Overview



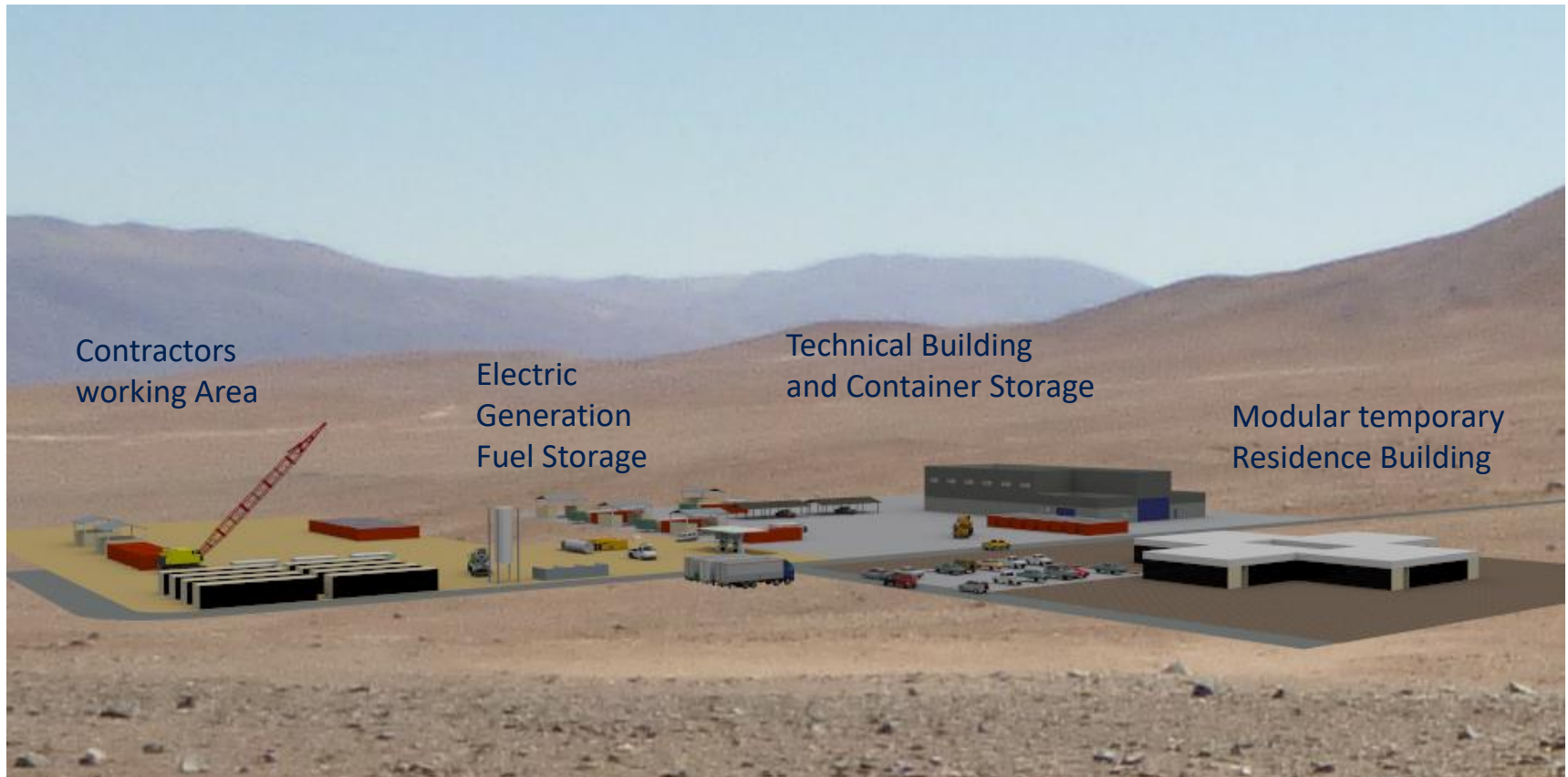
Support Buildings



Development Overview



Support Buildings



Development Overview



Support Buildings – Technical Building



Development Overview



Support Buildings – Data/Control Building



Development Overview



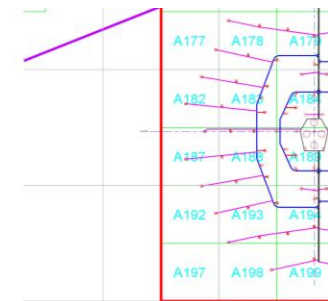
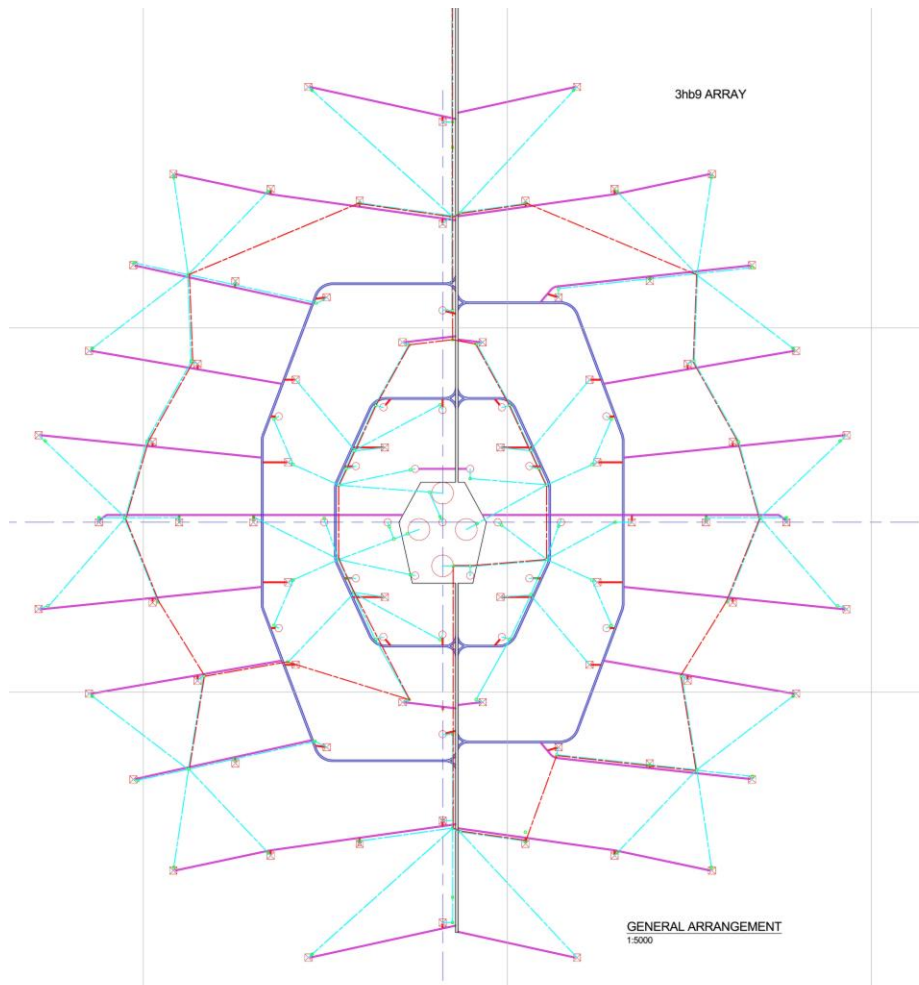
Support Buildings – Data/Control Building



Development Overview



Ducts and Cable Full Array



LEGEND

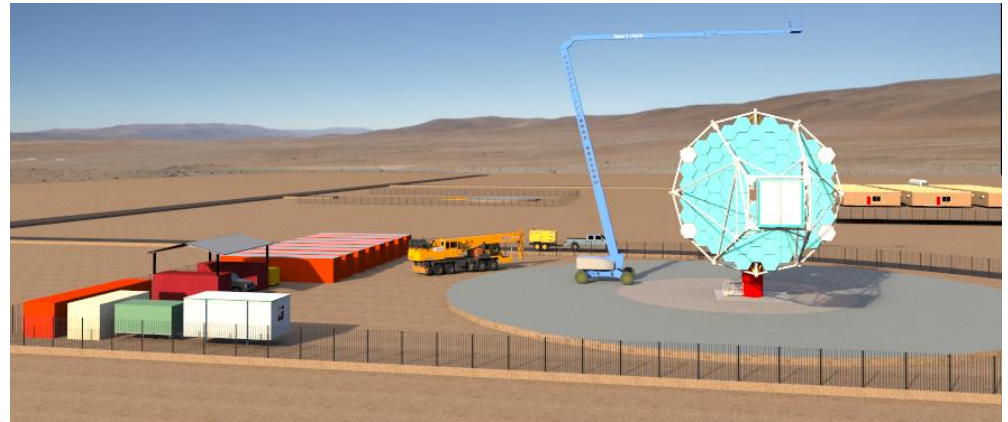
- RING MAIN WITH CABLE PITS - TYPICALLY POWER, FIBRE OPTIC, EARTH CABLES
- INDIVIDUAL TELESCOPE CABLE ROUTES WITH CABLE PITS - TYPICALLY POWER, FIBRE OPTIC AND EARTH CABLE

Development Overview





Ducts and Cable North East Quarter

3hb9 ARRAY



LEGEND

-  RING MAIN WITH CABLE PITS - TYPICALLY POWER, FIBRE OPTIC, EARTH CABLES
-  INDIVIDUAL TELESCOPE CABLE ROUTES WITH CABLE PITS - TYPICALLY POWER, FIBRE OPTIC AND EARTH CABLE

Development Overview



Project Construction Drawings

On Site Infra have been working with Engineering Consultants Empresarios Agrupados resulting in the production of General Arrangement and detailed drawings for the roads, ducting and other underground services.

The drawings will be available on sharepoint for reference and on Jama for review and comment.

Further work is anticipated to finalise the telescope foundation design.



Thanks.....